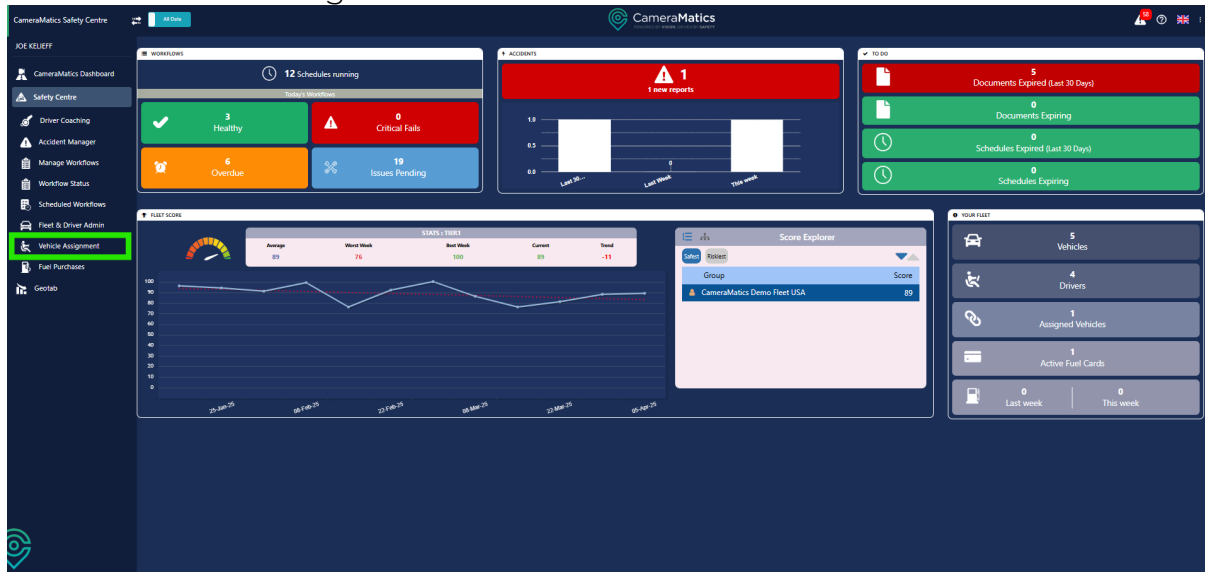
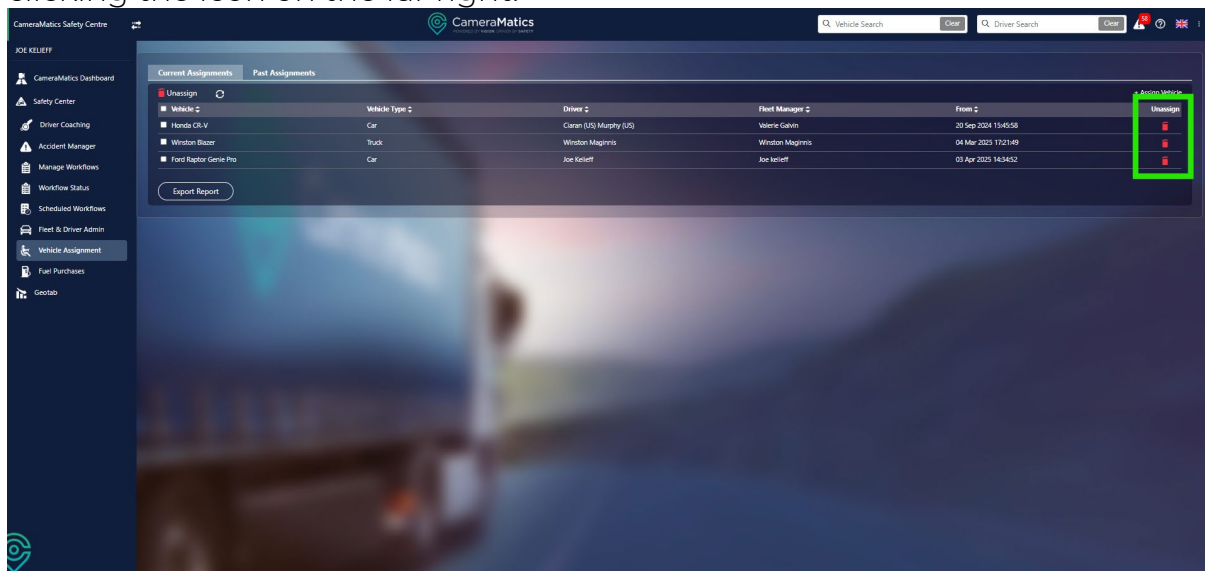


How to Assign Drivers to Vehicles


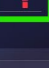

If they use the driver app, your drivers can assign themselves to vehicles. However, you can also do so manually as follows:
Click on Vehicle Assignment on the left hand menu.



You will see how vehicles are currently assigned. You can unassign these by clicking the icon on the far right.



The screenshot shows the 'Vehicle Assignment' table in the CameraMatics Safety Centre. The table has columns for 'Unassign', 'Vehicle', 'Vehicle Type', 'Driver', 'Fleet Manager', and 'From'. The 'Unassign' column contains a red icon with a white 'X' inside a green box. The table lists three vehicles: Honda CR-V, Winston Bloor, and Ford Raptor Genie Pro.

Unassign	Vehicle	Vehicle Type	Driver	Fleet Manager	From
	Honda CR-V	Car	Clara (US) Murphy (US)	Valerie Gavin	20 Sep 2024 15:45:08
	Winston Bloor	Truck	Winston Maginnis	Winston Maginnis	04 Mar 2025 17:21:48
	Ford Raptor Genie Pro	Car	Joe Kelleff	Joe Kelleff	03 Apr 2025 14:34:52

IRE HEAD OFFICE

Unit 20A Beckett Way,
Parkwest Business Park,
Dublin 12,
Ireland. D12 P8R2
Tel: +353 (0)1 963 1380

REGIONAL OFFICE

Arclabs Research &
Innovation Centre
WIT West Campus,
Carriganore,
Co. Waterford
Tel: +353 (0)1 963 1380

UK HEAD OFFICE

Unit F3, LEFA Business Park,
Sidcup, London
United Kingdom
DA14 5BH
Tel: +44 (0)20 3740 3562

My Safe Drive Ltd t/a CameraMatics

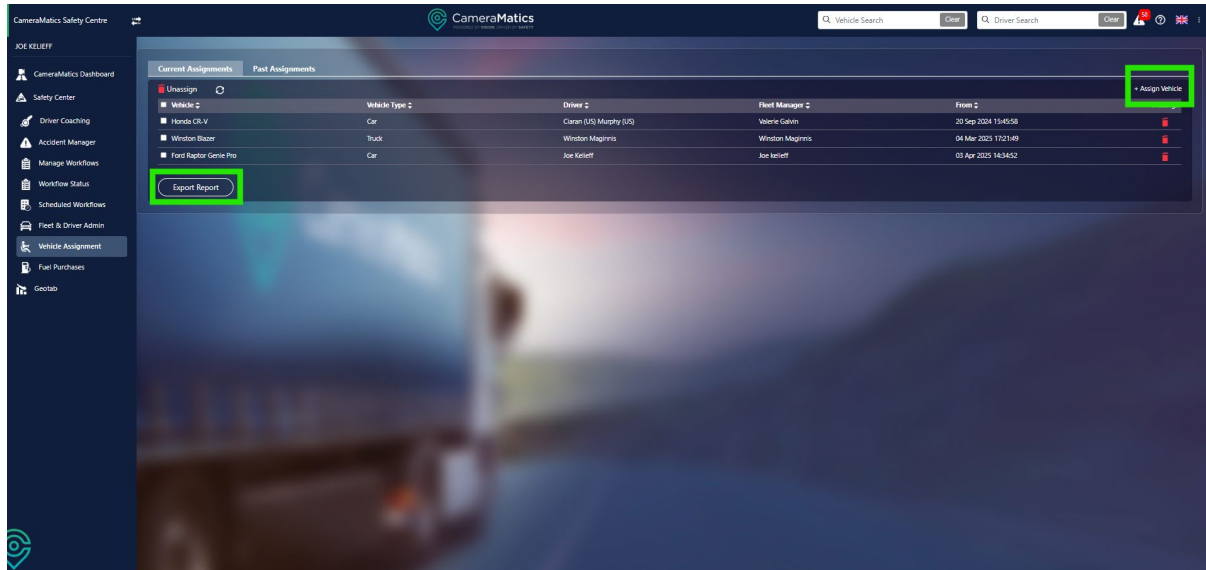
Registered in Ireland No. 548843
Directors: M. O'Callaghan, S. Murray, G. Burchell (GB), J. Wyles (GB)

Provision Vehicle Camera Limited t/a CameraMatics

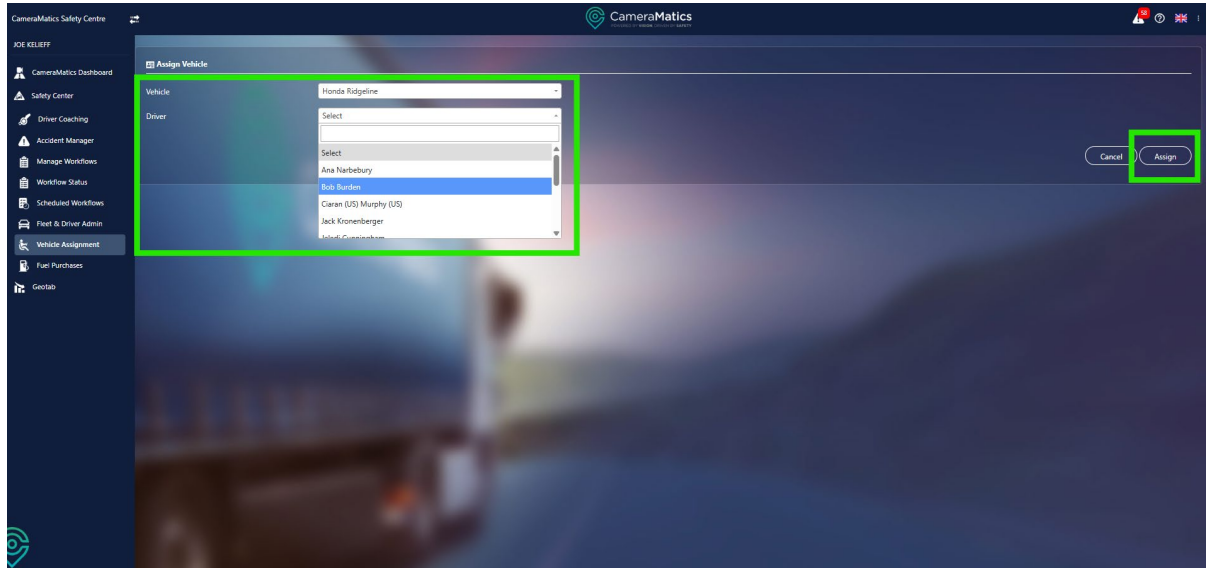
Registered in England No. 09939849
Directors: M. O'Callaghan, S. Murray, S. Warne

[CAMERAMATICS.COM](https://www.cameramatics.com)

You can assign a driver to a vehicle by clicking the button in the top right of the table. You can also export the report itself using the button at bottom left.



To assign a driver to a vehicle, you need to select the vehicle and then the driver. Once done, click assign, and the driver will then be assigned to the vehicle.



You can view past assignments for your fleet by clicking on Past assignments at the top.

IRE HEAD OFFICE

Unit 20A Beckett Way,
Parkwest Business Park,
Dublin 12,
Ireland. D12 P8R2
Tel: +353 (0)1 963 1380

REGIONAL OFFICE

Arclabs Research &
Innovation Centre
WIT West Campus,
Carriganore,
Co. Waterford
Tel: +353 (0)1 963 1380

UK HEAD OFFICE

Unit F3, LEFA Business Park.,
Sidcup, London
United Kingdom
DA14 5BH
Tel: +44 (0)20 3740 3562

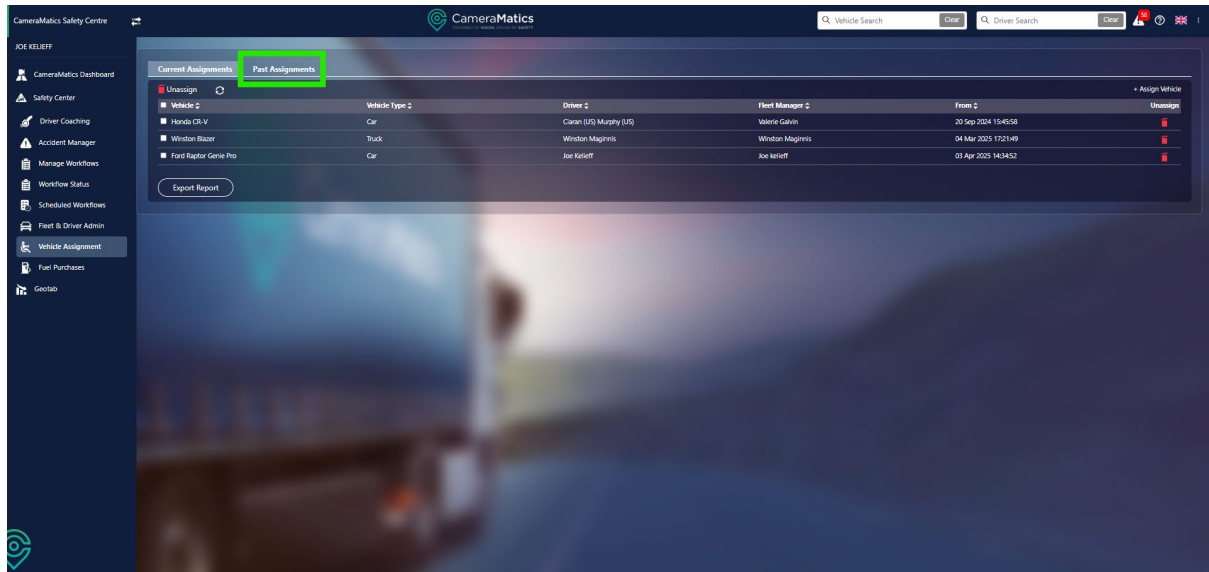
My Safe Drive Ltd t/a CameraMatics

Registered in Ireland No. 548843
Directors: M. O'Callaghan, S. Murray, G. Burchell (GB), J. Wyles (GB)

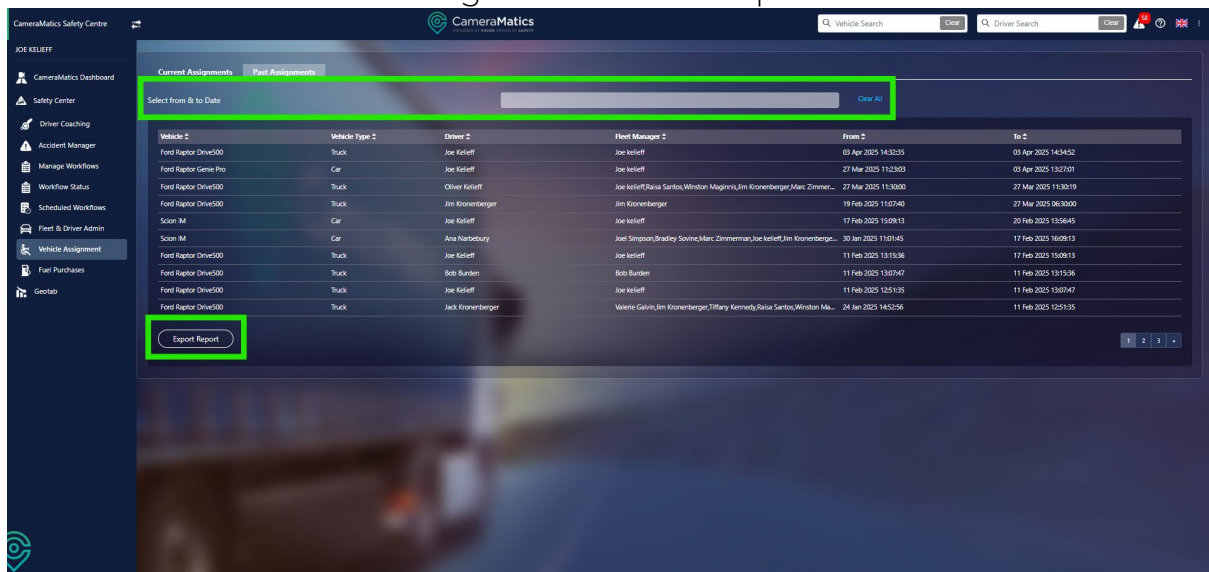
Provision Vehicle Camera Limited t/a CameraMatics

Registered in England No. 09939849
Directors: M. O'Callaghan, S. Murray, S. Warne

[CAMERAMATICS.COM](https://www.cameramatics.com)



You can select a date range and view which vehicles have been assigned to which drivers within that range. You can also export this to an Excel sheet.



IRE HEAD OFFICE

Unit 20A Beckett Way,
Parkwest Business Park,
Dublin 12,
Ireland. D12 P8R2
Tel: +353 (0)1 963 1380

REGIONAL OFFICE

Arclabs Research &
Innovation Centre
WIT West Campus,
Carriganore,
Co. Waterford
Tel: +353 (0)1 963 1380

UK HEAD OFFICE

Unit F3, LEFA Business Park,
Sidcup, London
United Kingdom
DA14 5BH
Tel: +44 (0)20 3740 3562

My Safe Drive Ltd t/a CameraMatics

Registered in Ireland No. 548843
Directors: M. O'Callaghan, S. Murray, G. Burchell (GB), J. Wyles (GB)

Provision Vehicle Camera Limited t/a CameraMatics

Registered in England No. 09939849
Directors: M. O'Callaghan, S. Murray, S. Warne

[CAMERAMATICS.COM](https://www.cameramatics.com)